

Plug & Drive Studio changelog

Contents

1 Release 2.1.7.....	4
1.1 Changes.....	4
1.2 Bugfixes.....	4
2 Release 2.1.6.....	4
2.1 Changes.....	4
3 Release 2.1.5.....	4
3.1 Changes.....	4
4 Release 2.1.4.....	4
4.1 Additions.....	4
4.2 Changes.....	4
4.3 Bugfixes.....	4
5 Release 2.1.3.....	4
5.1 Changes.....	4
5.2 Bugfixes.....	5
6 Release 2.1.2.....	5
6.1 Bugfixes.....	5
7 Release 2.1.1.....	5
7.1 Changes.....	5
7.2 Bugfixes.....	5
8 Release 2.1.0.....	5
8.1 Changes.....	5
9 Release 2.0.5.....	5
9.1 Changes.....	5
10 Release 2.0.4.....	6
10.1 Bugfixes.....	6
11 Release 2.0.3.....	6
11.1 Changes.....	6
11.2 Bugfixes.....	6
12 Release 2.0.....	6

12.1 End Of Support.....	6
12.2 Save category.....	6
12.3 Changes in the status widget.....	7
 13 Release 1.0.....	8
13.1 Fieldbus related changes.....	8
13.2 Other Changes.....	8

1 Release 2.1.7

1.1 Changes

Minor changes

1.2 Bugfixes

Halt button

2 Release 2.1.6

2.1 Changes

Support for new Firmware

3 Release 2.1.5

3.1 Changes

Connecting to Bootloader. NIC is not autofilled.

4 Release 2.1.4

4.1 Additions

Added missing error codes 21+ (object 0x1003)

4.2 Changes

- Updated to log4j 2.18.0.
- Removed restrictions for storeable category

4.3 Bugfixes

Error table, read only subindex 1

5 Release 2.1.3

5.1 Changes

Updated to log4j 2.17.0.

5.2 Bugfixes

- ZK-USB-RS485-1 timeout
- Peak Adapter with baudrate lower than 1Mbd
- Compile NanoJ: Map file writes into Elf files
- UTF-8 issue in OD meta data

6 Release 2.1.2

6.1 Bugfixes

Modbus Parity, Databit and Stopbit does not update correctly.

7 Release 2.1.1

7.1 Changes

Include firmware update for PD4-Ex-E65-x in the distribution package.

7.2 Bugfixes

Negative oscilloscope trigger won't freeze Plug & Drive Studio.

8 Release 2.1.0

8.1 Changes

1. This release is now able to connect all firmware versions up to FIR-v2039.
2. Added support for HMS IXXAT driver VCI 4.0 (CANopen).
3. Additional folder for `od.xml` files. Insert an `od.xml` into the path `%PNDS_INSTALL_FOLDER%\workspace\od-metadata`, PnD Studio will recognize and use this file in the connection wizard as well. Therefore it is not longer necessary to load this `od.xml` in the connection wizard manually.
4. Torque Current (3210h:07h) and Flux Current (3210:05h) have now separate slide controller for P- and I-component.

9 Release 2.0.5

9.1 Changes

This release is now able to connect all firmware versions up to FIR-v1850.

The firmware "CL4-E-x" is included in the distribution package of Plug & Drive Studio and is usable for the following controller:

- CL4-E-1-12
- CL4-E-2-12
- CL4-E-1-12-5VDI

■ CL4-E-2-12-5VDI

10 Release 2.0.4

10.1 Bugfixes

This release includes a bugfix in ethercat master in case the network adapter is slower than expected.

11 Release 2.0.3

11.1 Changes

This release includes the following changes:

1. The drop down list in "Profile position" tab for starting a movement is now a button.
2. Added object 0x2301 to the object dictionary in case no od.xml is available.

11.2 Bugfixes

This release includes the following bugfixes:

1. Fixed check of bootloader version when updating the firmware.
2. Added conversion to the signed values.
3. Changed text field "Encoder resolution" from 0x60E6:0x00 to 0x60E6:0x03
4. The text field "Current" in "Homing on block" section of tab "Homing" now displays correct.
5. The text field "MAC Address" in "Firmware update" for EtherNet could be set only once.

12 Release 2.0

12.1 End Of Support

With this release, the support of Linux and MacOS ends.

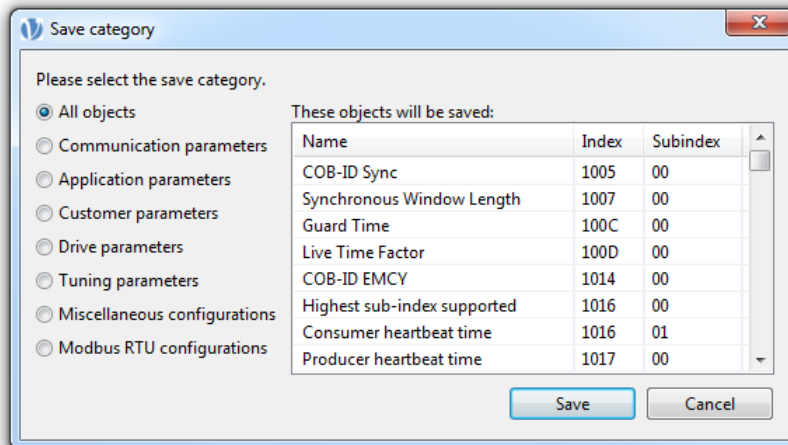
With this release the support of controller with firmware version FIR-v1650 or older ends. The controller can be updated to the newest version of the firmware when connecting a controller with old firmware for the first time.

12.2 Save category

Added save category to the od table:

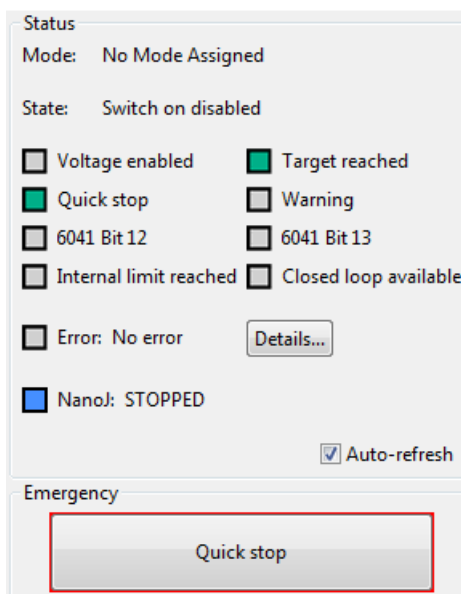
333	Clock Direction Divider	2058	00	read/write	INTEGER32	00000001	1	0000 0000 0000 0000 0000 0000 0000 0000	application
334	Encoder Configuration	2059	00	read/write	UNSIGNED32	00000000	0	0000 0000 0000 0000 0000 0000 0000 0000	tuning
335	Absolute Sensor Boot Value (in user units)	205A	00	read only	INTEGER32	00000000	0	0000 0000 0000 0000 0000 0000 0000 0000	no
336	Clock Direction or Clockwise/Counter Clockwise Mode	205B	00	read/write	UNSIGNED32	00000000	0	0000 0000 0000 0000 0000 0000 0000 0000	application
337	Bootup Delay	2084	00	read/write	UNSIGNED32	00000000	0	0000 0000 0000 0000 0000 0000 0000 0000	application
338	Fieldbus Module Availability	2101	00	read only	UNSIGNED32	0019000F	1638415	0000 0000 0001 1001 0000 0000 0000 1111	no
339	Fieldbus Module Control	2102	00	read/write	UNSIGNED32	0019000F	1638415	0000 0000 0001 1001 0000 0000 0000 1111	communication
340	Fieldbus Module Status - Highest sub-index supported	2103	00	read only	UNSIGNED8	02	2	0000 0011	no
341	Fieldbus Module Status - Fieldbus Module Disable Mask	2103	01	read only	UNSIGNED32	0010000E	1048590	0000 0000 0001 0000 0000 0000 0000 1111	no
342	Fieldbus Module Status - Fieldbus Module Enabled	2103	02	read only	UNSIGNED32	0019000F	1638415	0000 0000 0001 1001 0000 0000 0000 1111	no
343	NanoI Control	2300	00	read/write	UNSIGNED32	00000000	0	0000 0000 0000 0000 0000 0000 0000 0000	application

New dialog when saving parameters:

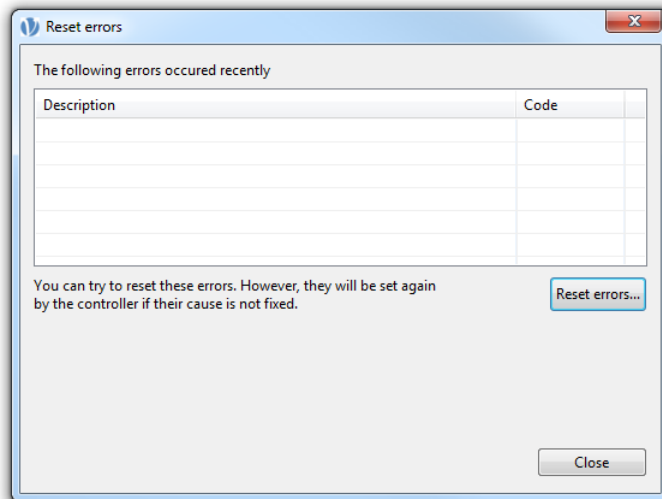


12.3 Changes in the status widget

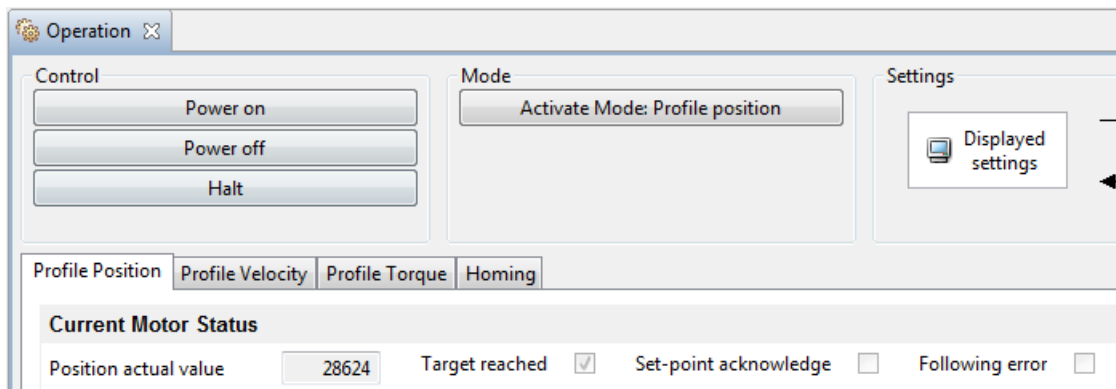
Status widget in the lower left corner now showing "statusword" (0x6041) only and the button **Quick stop** was added:



New dialog for errors when clicking on **Detials** in the status widget:



Control of the power of the motor is now done with the buttons **Power on** and **Power off** in the tab **Operations**:



13 Release 1.0

13.1 Fieldbus related changes

- Full support of all N5 with REST
- Support of Modbus/TCP
- Support of EtherCAT
- Support of Peak adapter for CANopen

13.2 Other Changes

- Multiple number of CANopen IXXAT Adapters are now supported
- The OD table filters are now stored